



SlimJim



SLIM JIM

UNDER-COUNTER CONTAINERS



SlimJim



EVEN EASIER ACCESS

New Slim Jim® Under-Counter containers are designed with a large, angled opening, providing **2X more** access under the counter than traditional slim containers.* This eliminates the need to pull containers out from under the counter, improving user productivity.

*Compared to 87L Vented Slim Jim containers

A PURPOSE-BUILT SOLUTION TO DISPOSE OF WASTE IN THE TIGHTEST SPACES



LARGE ANGLED OPENING

Avoids the need to pull out the container when throwing waste away, improves user productivity.



SPACE EFFICIENT DESIGN

Designed to maximize capacity without compromising access to the counter.



2 SIZES AVAILABLE

Available in 49L and 87L capacities.

49L containers fit on stainless steel and resin dollies to enable efficient collection and transportation.

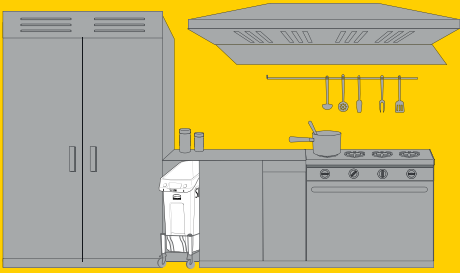


SIMPLE LINER REMOVAL

Slim Jim® integrated venting channels and built-in base and rim handles make it easy to lift the liner and empty the container.

Bag cinches secure the liner around the container and allow for a quick, knot-free liner change.

RECOMMENDED APPLICATIONS



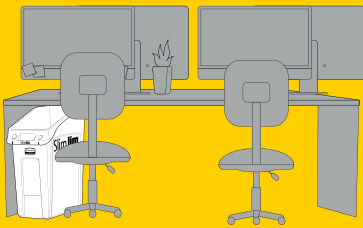
Kitchen



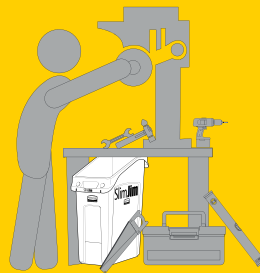
Bar



Reception desk



Desk



Workstation



Shop counter

▶ SLIM JIM® UNDER-COUNTER CONTAINERS						
CAPACITY \ COLORS	GRAY	BLUE	GREEN	DIMENSIONS (CM)	DIMENSIONS (CM) (with stainless steel dolly)	PACK SIZE
49L	2026695	2026699	2026700	55.8 x 24.9 x 66	55.8 x 24.9 x 76.4	4
87L	2026721	2026725	2026726	55.8 x 38.1 x 76.2	-	4



87L

49L



87L

49L



87L

49L



SlimJim®

© 2019 Newell Europe Sàrl 10, Chemin de Blandonnet
1214 Vernier/Geneva, Switzerland
rubbermaid.eu